

FARM MACHINERY RETIREMENT/ CONSIGNMENT

AUCTION

Saturday, March 16, 2024 • Live & Online 9:30 a.m.

Location: Onawa Dragway, 22940 248th St., Onawa, IA

Directions: Just South of Onawa, IA on K45. West on 248th St to entrance.

Auctioneers Note: Here is an opportunity to bid at public auction, on some very nice late model quality farm machinery and other items. Long time Sloan, IA area farmer Terry Small has now decided to retire his farm operation and downsize his machinery fleet. We also have a handful of other consignors who will join in on this auction and offer some very nice machinery. This sale will be conducted on the grounds of the Onawa Dragway South of Onawa, IA. Items will be available for public preview Monday through Friday from 7:30 a.m. - 5 p.m. after March 4. For questions or an appointment outside of these hours, please contact Steve Hiller at 712-830-5399.



2019 John Deere S780
SN1H0S780SKKT806584, 4WD, 1100/848 hours, 1250/35R46 LSW, power fold bin ext, premium cab w/ leather, high wear package, 28' auger



2012 John Deere 8310R
SN 1RW8310RTCP061846, 2880 hours, 480/80R50 rear duals, 1000 lb rear inside wts, 380/80R30 front duals, Powershift, ILS front end, foot throttle. Nice!



2014 John Deere R4038
SN 1N04038RJE0006559, 380/90R46 Rubber, 1000 gal SS tank, 100' boom, 2432 hours, JD 2630 screen with AT SF2 and Section Control



2012 John Deere 4940
SN 1N04940XTC0023344, 380/105R50 Rubber, New Leader L3030G4 dry box, 2475 hours, 2630 screen w/ Auto Trac SF2



2008 John Deere 7130
SN L07130H562151, MFWD, JD 740 Classic Loader, Joystick, 3240 Hours, Power Quad w/ LHR, 18.4R38 Duals



2001 John Deere 8410
SN RW8410P014894, 710/70R 38 Rear Duals, 600/65R28 Fronts, 5 Hydraulics, 3 Point with quick hitch, 1000 RPM PTO, Rear 1500 lb weights, Powershift, Shows 6113 hours



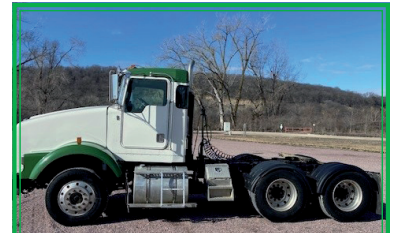
1997 John Deere 8400
SN RW8400P011843, MFWD, 380/85R34 Fronts, 480/80R46 Duals, 4 Hydraulics, Aux hyd connections, 3 point with quick hitch, 1000 RPM PTO, Powershift, Auto Trac Ready, Shows 8870 hours



Unverferth Nutrimax 2600
60' 23 row side dress machine Has 2,000 acres on new coulters and knives Added Y drops



Brent 1080
SN B21960152 Roll tarp Back up camera 35.5x32 Firestone diamond tread tires



1996 Kenworth T800
Cat 3406B, 11R22.5 Rubber, Aluminum/Steel Wheels, Air Ride, Manual slide 5th wheel, Dual fuel tanks, shows 211,879 miles

VEHICLES/TRAILERS

- 1996 Freightliner FLD 112- VIN 1FUYG6CB5TH849819, 9 speed, Cummins Recon Dual fuel tanks, Air slide, Air ride, 11R24.5 rubber, Steel Wheels
- 1996 Wilson DWH400, VIN 1W1MAF1W6VA224188 425/65R22.5 Singles Alum Wheels Spring Ride, Elec trap openers and elec tarp
- 2001 Wilson DWH400, VIN 1W1MAF1W32A235693 11R22.5 Rubber Steel wheels Spring Ride, Elec tarp
- 1997 Wilson Grain Trailer- Air ride, tandem axle, ag hoppers, 11R24.5 rubber, alum wheels, manual tarp
- Mauer M38 Head Trailer, SN B7881 Tandem Axle Lights No brakes
- Dose Head Hunter Arrow-Tandem axle, lights, 42', SN 831118
- 2015 Chevrolet Equinox LTZ, VIN 1GNFLHEK6FZ127163 AWD 103K Miles
- 2013 H&H Car Trailer-20', Beaver tail w/ fold up ramps, tandem 7000 lb axles
- 1997 Utility 45' Flatbed Trailer-Steel Wheels, Spring Ride, 1600 Gal Yellow Poly tank, 2700 Gal White Poly Tank, Cone Inductor
- 2008 Cadillac DTS, V8 Northstar, 120K miles
- 1999 Econoline MP423D Trailer-17' deck, 5' beaver tail, 24,000 lb gross, fold over ramps, bolt on 2 5/16 ball, walking tandems

CONSTRUCTION

- Sumitomo SH200 Excavator- Believed to be 1995 model. Unverified., SN 200A1-4713, Shows 4424 Hours, 32" Tracks
- System Schultheis Electric Forklift-model ESTL 301G, 5500 lb, w/ three 48" forks, needs batteries, 1979 model
- Hubtex Electric Forklift-type 1.5TS4L, 1997 model, 30" forks, needs batteries
- Kalmar Electric Forklift-model EFY 35/12/60 F1MS, 7700 lb, 1988 model, four forks, needs batteries
- JLG 400S Man Lift-Duetz diesel, rough terrain, 3'x8' basket, 2006 model
- Vermeer Diggin Dutchman Trencher-Detroit diesel, tracks, 17' trencher, motor runs, mechanical problems

More items expected by sale time!

Lunch provided by Onawa Dragway

FARM MACHINERY

- 2000 John Deere 9400T-SN RW9400T900276, 6245 hours, 30" track, bareback, 4 Hydraulics, quad range transmission
- 2003 John Deere 6615-SN L06615D365619, JD loader w/ joystick, 16.9x38 rears, 10.00-16 fronts, 2 hydraulics, 3 point, 540 PTO, power quad, approx. 7,000 hours
- 1999 Rogator 854, 80', 800 Gal, 380/90R46 Tires Great shape, Side fill 2", 3 way nozzle bodies, Spring ride, 20" nozzle spacing, Cummins 5.9 motor, Raven SCS 750 with spare, Trimble EZ BOOM 2010, EZ Steer 500 System, Shows 4148 hours, 5 section
- 1996 Rogator 854-SN 850419501, Shows 6213 hours, 420/80R46 Rubber, Chemical Inductor, 90' Boom, 800 Gal
- 2014 JD 612C, Chopping SN 1H00612CJEC766150 Stalk Master Single Point Hookup Hydraulic Deck Plates
- 2014 JD 640FD, SN 1H0640FDEE0766012
- 2022 JD 560M, SN 1E0560MDLNN485716, 3,804 Bales, 5x6, Net wrap, Small 1000 PTO, Monitor
- 2009 J&M 1151- Scale w/ Libra, Large 1000, 22" Auger, 1250 floatation, tarp
- Meridian 220 BST-SN 42738, Free Flo dry inoculator, Tandem Axle, 8 Bolt, Lights, Honda motor w/ elec start,
- Friesen 220-Tender only, no cart, Honda motor
- Peck 10x56 Auger-Electric, no motor
- JD 980, N00980X005195 45ft, 3 bar harrow shanks in good shape
- Knight 3300 Feed Wagon-scale, works good
- Degelman Strawmaster 7000 Harrow-64'
- International 4700-30'
- B&B 3 Point Sprayer-60'
- Big Ox 3 Point Blade-manual
- Pair Saddle Tanks-JD 40-50 Ser Mounts
- Round Bale Trailer-26', pull type, walking tandems
- 250 Bu Gravity Wagon-on Homemade 2 wheel cart, hyd unload auger
- Demco 3 Point Sprayer-80', Raven SCS 450
- Pack KSH5940 Flail Shredder
- Peck 10x41-PTO, bin hopper
- Industrias America 500 Gal Fuel Trailer, tandem, 8 bolt w/pump

MISC. ITEMS & BUILDING MATERIALS



Over 100 total bundles

- Double Tin Insulation-3", 4", 6" thick, 42" wide, lengths from 8' to 53'
- Corrugated building steel, various colors, 36" wide, up to 24' length
- Misc metal building tin
- Sheets of rigid foam insulation
- Aaladin Hot Water Pressure Washer
- Cummins Power Generator, single end 3-phase, rated 20KW, natural gas, 125 hours

RIVERSIDE
AUCTION & SALES LLC

662 Hwy. 75
Tekamah, NE 68061

**FARM MACHINERY
RETIREMENT AUCTION
Saturday, March 16
Onawa, IA**

TERRY SMALL, OWNER & OTHERS



Scan this code to see the full lineup and to bid!



Sale conducted by:

RIVERSIDE
AUCTION & SALES LLC

www.riversideauctionandsales.com

Randy Olson, Auctioneer: 402-870-1145 • Brandon Mathistad: 308-760-6991
Steve Hiller, Auctioneer: 712-830-5399 • Kyle Rollins, Auctioneer

PLEASE POST

TERMS & CONDITIONS
Cash or good check. No property to be removed until settled for. All items to be paid for during or at close of auction. Not responsible for accidents, lost or stolen items. List subject to change. Announcements made day of sale take precedence over printed material.